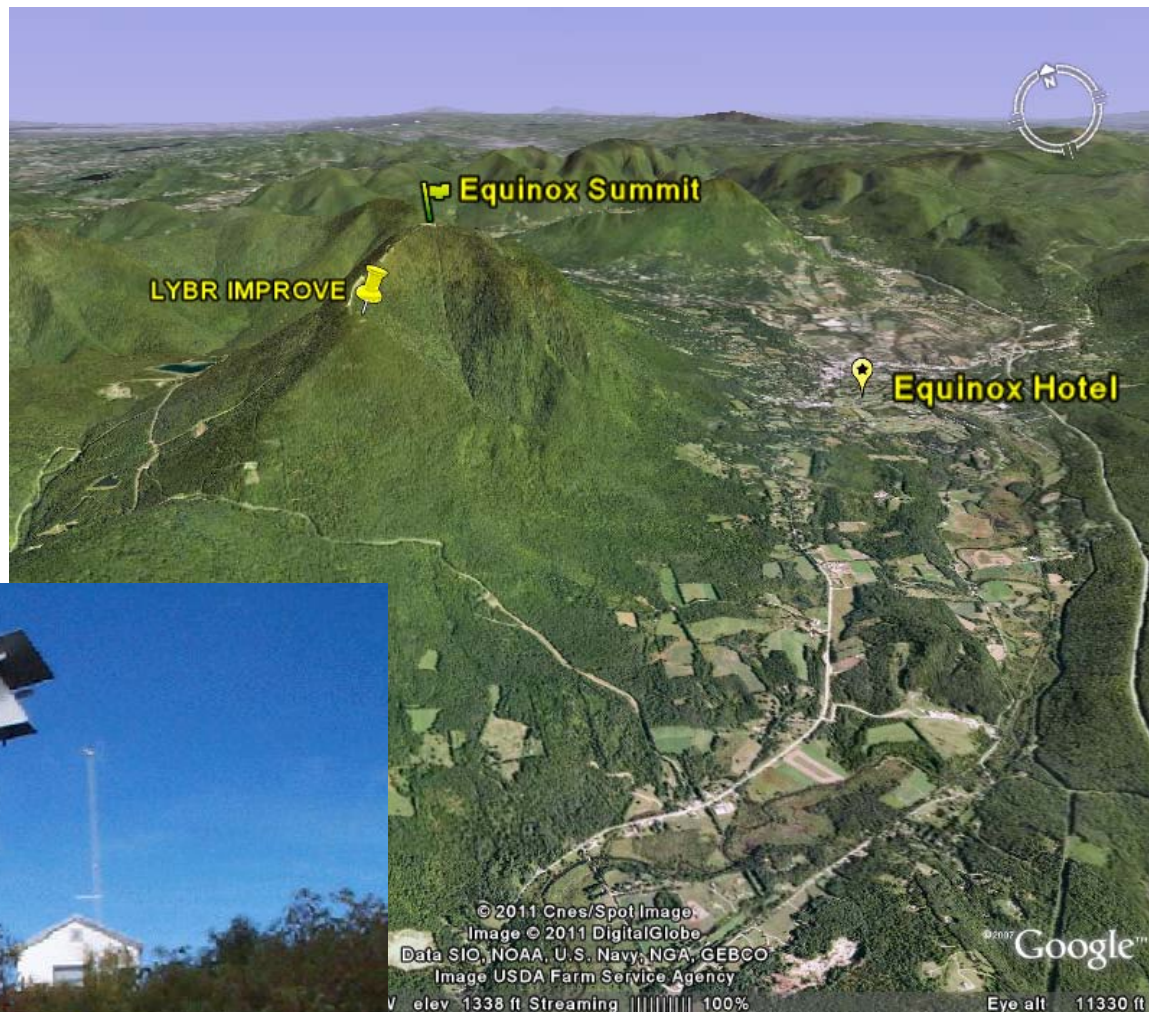
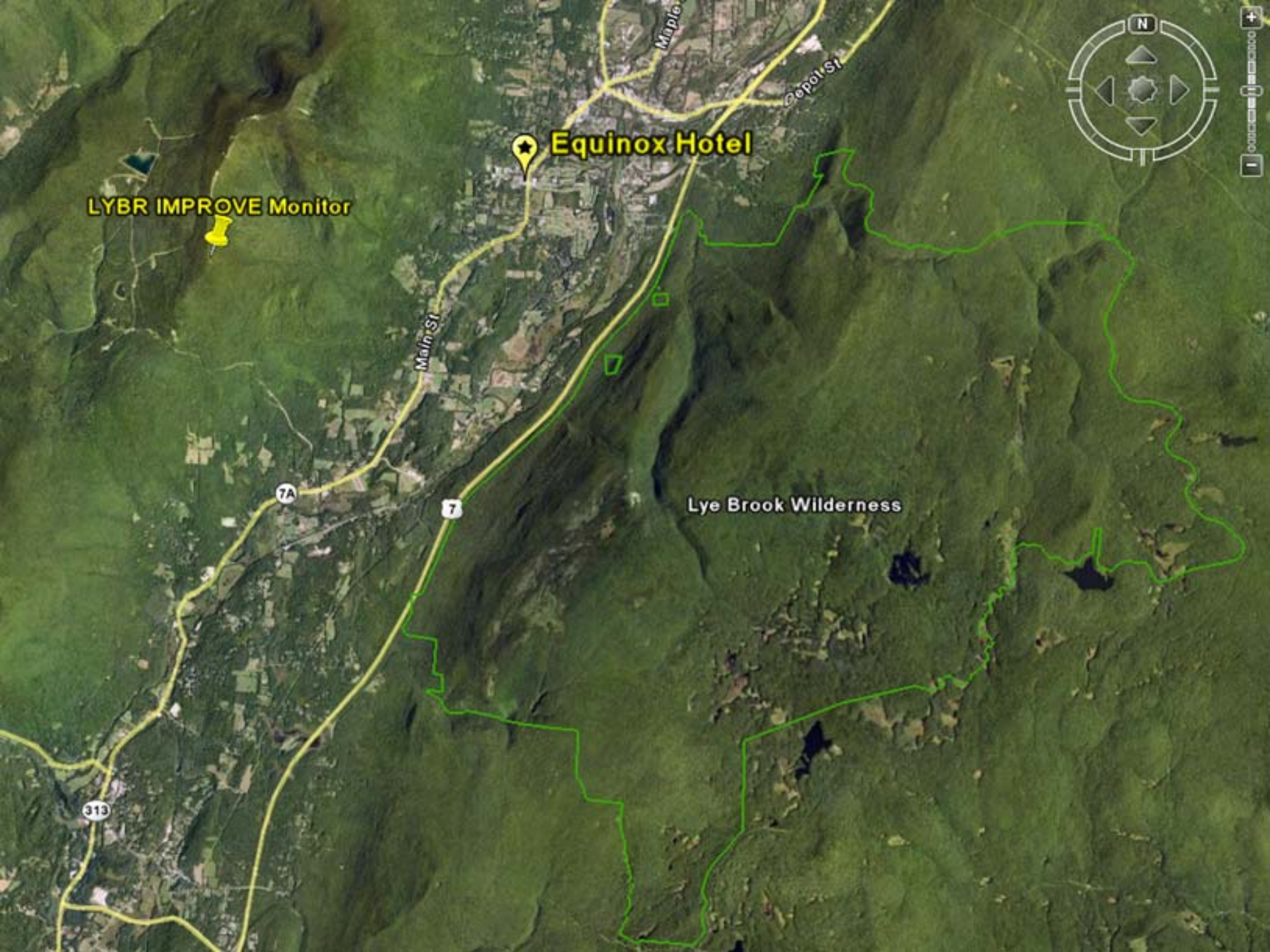


# Lye Brook IMPROVE Monitoring Site



Established 1991 on  
'Little Mt. Equinox'  
1006 meters Elev.



**Equinox Hotel**

**LYBR IMPROVE Monitor**

**Lye Brook Wilderness**

Main St

Maple

Depot St

7A

7

313



LYBR IMPROVE Monitor

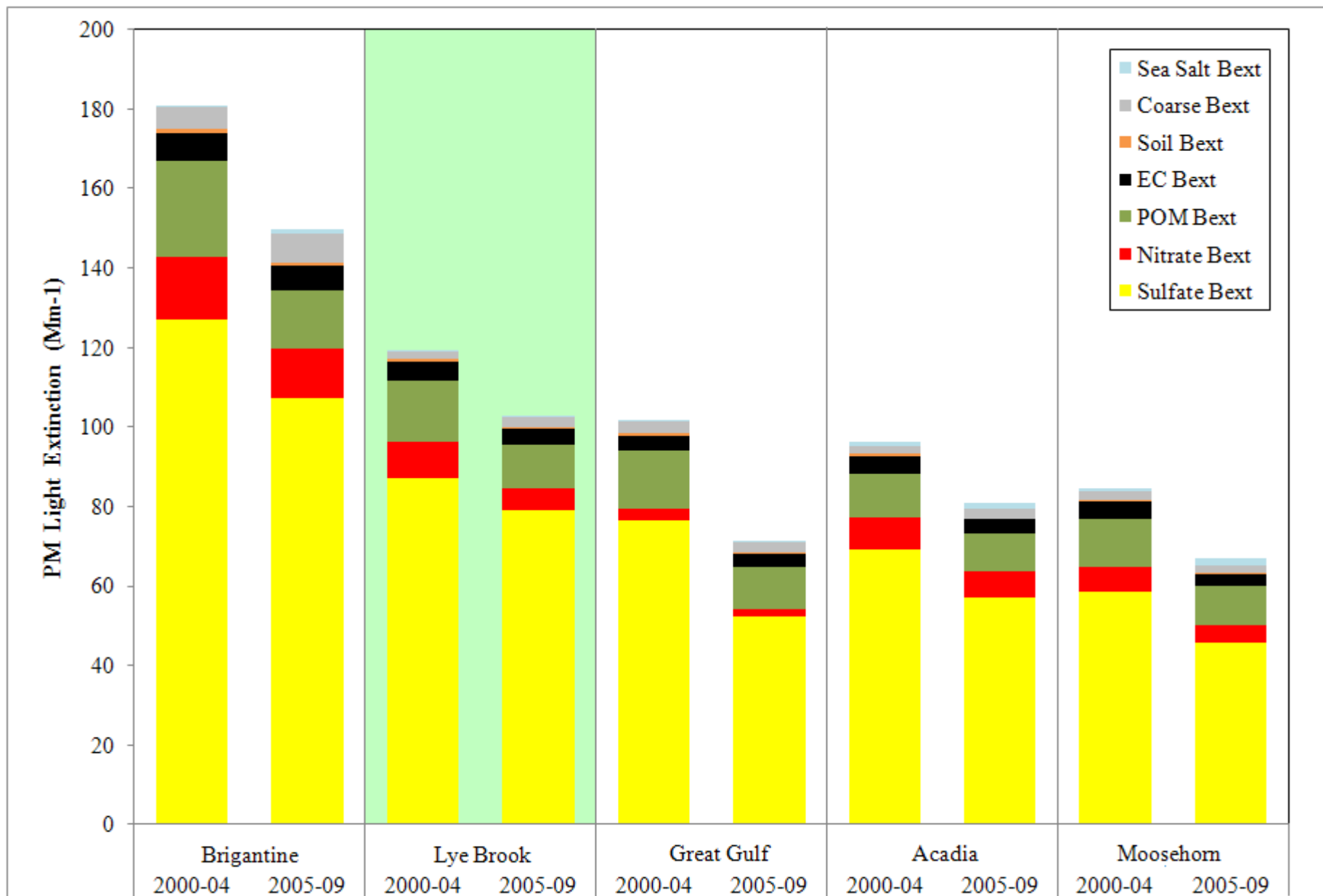


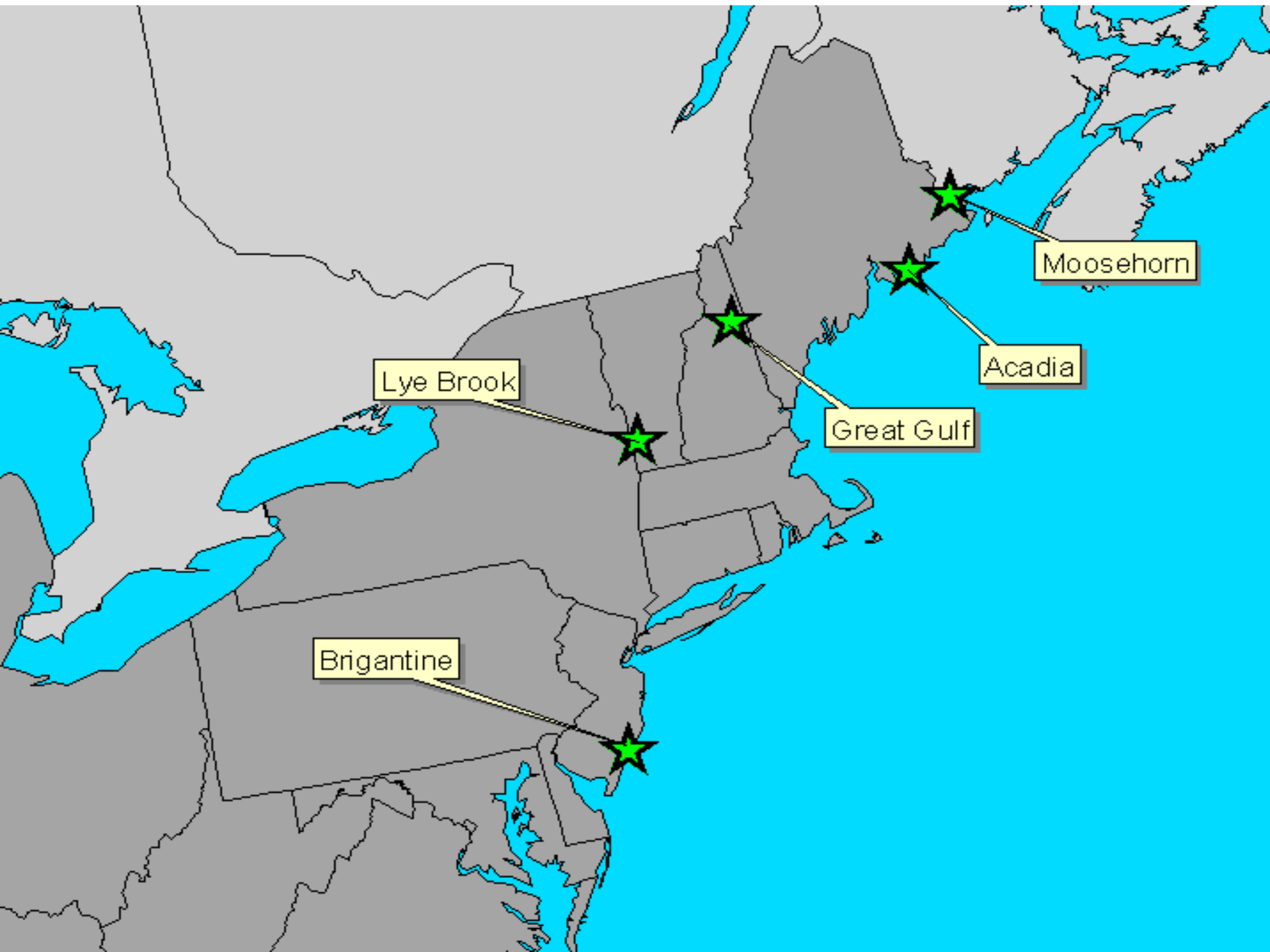
Equinox Hotel

Lye Brook Wilderness



# Haziest 20 % Days: Visibility Improved at All MANE-VU Sites (& All Major Species)





Brigantine

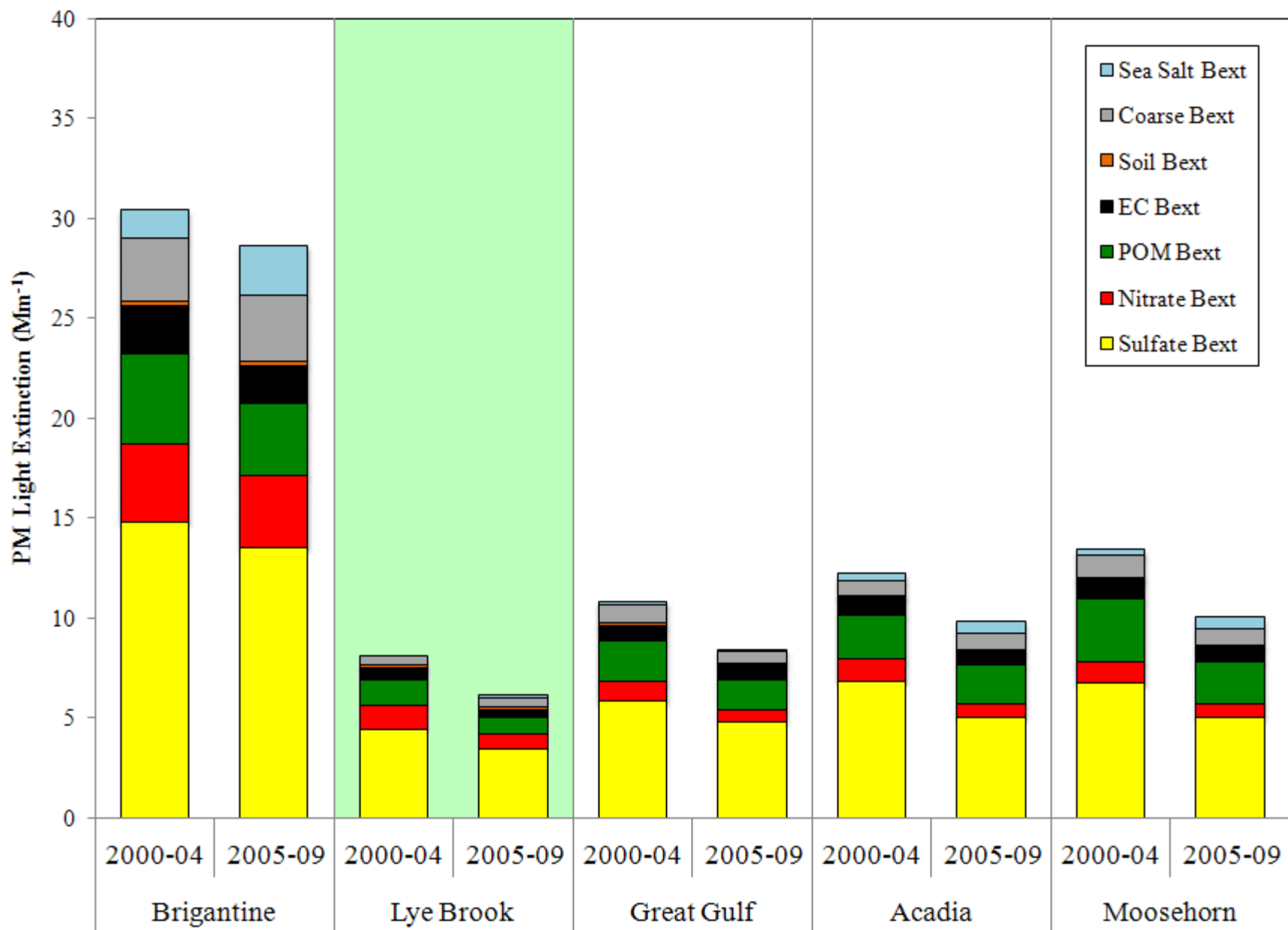
Lye Brook

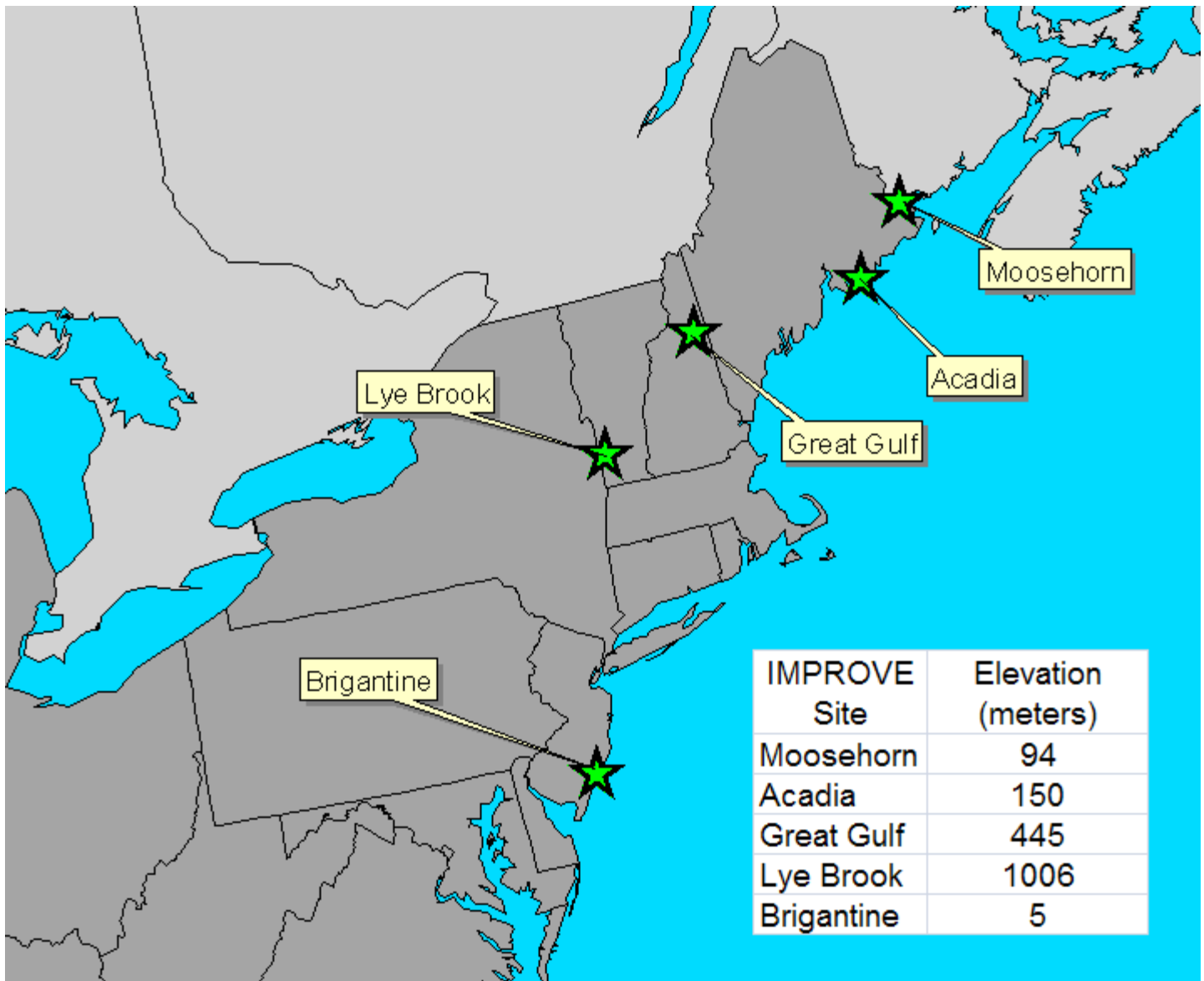
Great Gulf

Acadia

Moosehorn

# Clearest 20 % Days: Visibility Improved at All MANE-VU Sites (& All Major Species)





# But All is Not Well at Lye Brook IMPROVE site

- Recurring Problems with Reliability of Power Supply
- Recent Data Losses (especially in Winter)
- Large Proposed Rent Increase

## Need to Find a New Monitoring Site

- Representative of Wilderness Area & Current Site
- How will a new site affect Compliance Trends?



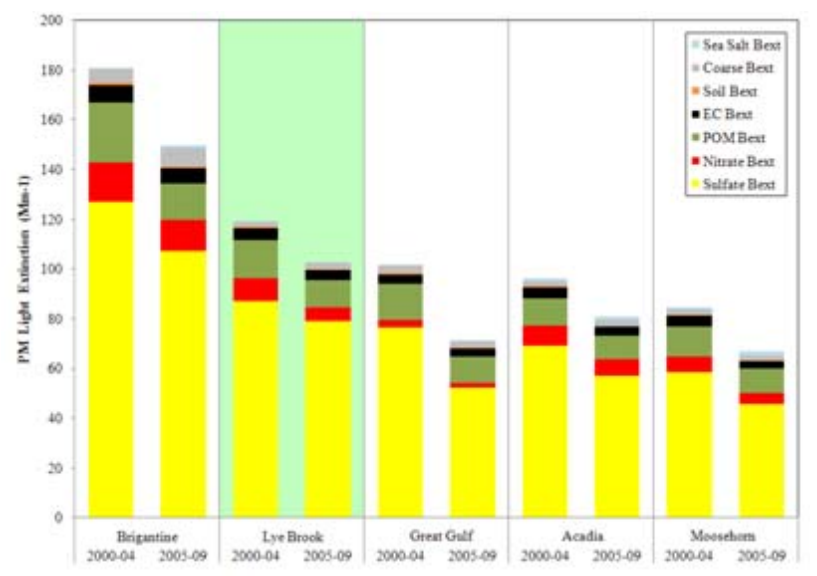


**LYBR IMPROVE Monitor**



**Mt. Snow IMPROVE Maybe**





How will the move affect our Trends 5 years from Now?

