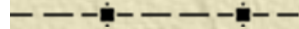
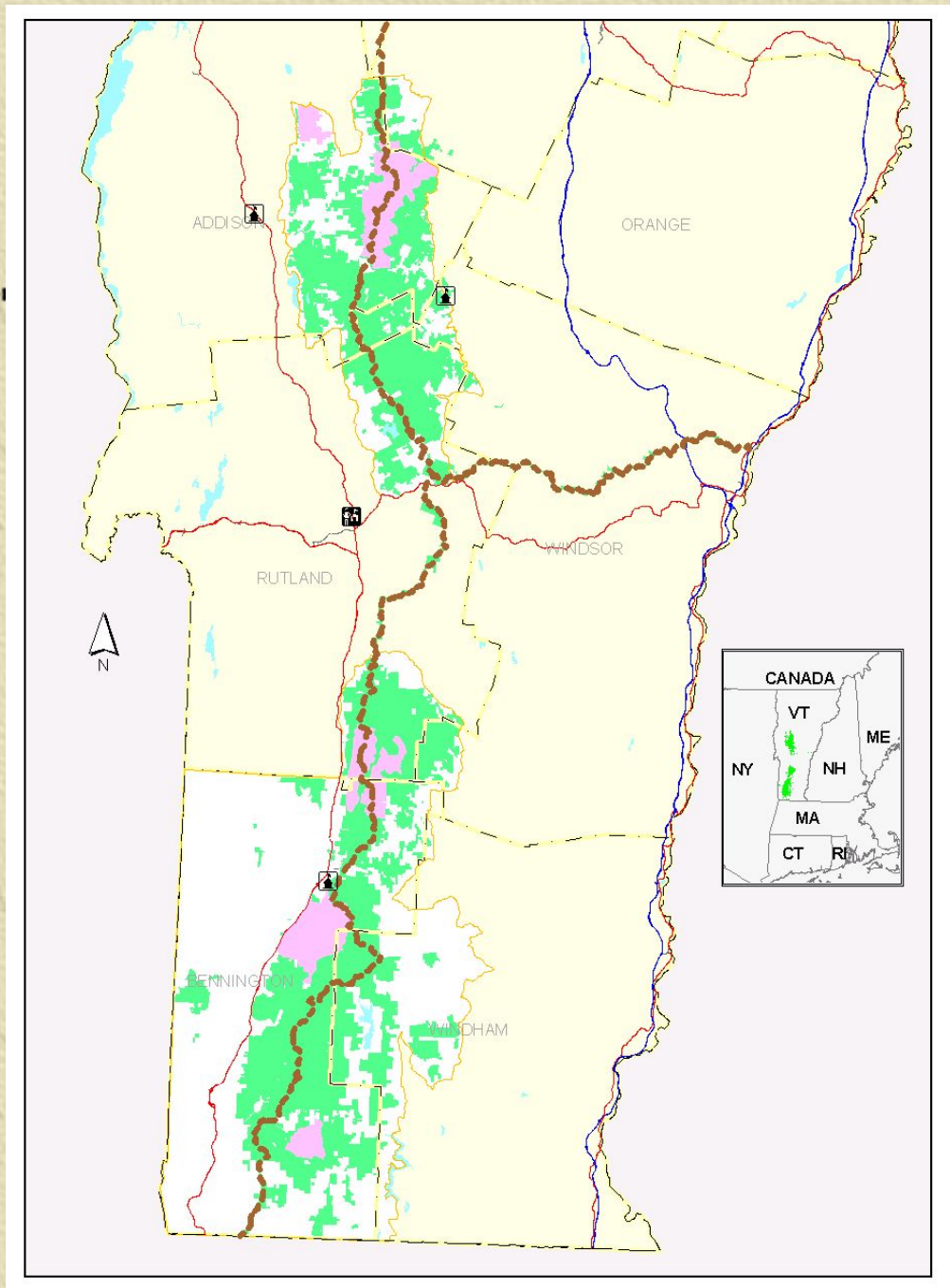
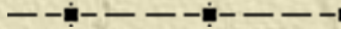


(A brief) History of Lye Brook

Class I Wilderness Area

Green Mountain National Forest





What does the GMNF do?



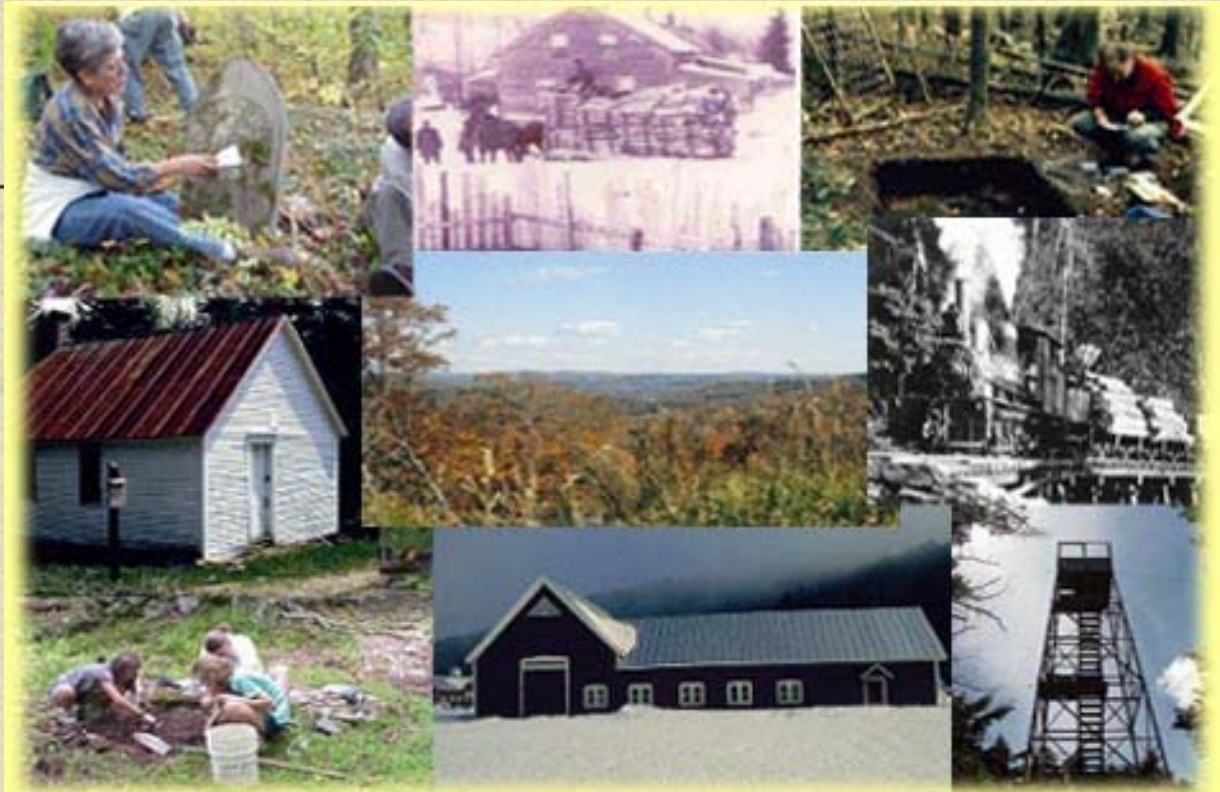
- ✠ Our mission is to sustain, protect and enhance forest ecosystems.
- ✠ We are a “multiple use” Forest, so we balance timber, recreation, plant & animal species and habitats, soil-water-air protection, and historic preservation needs as parts of the larger whole.

Forest History

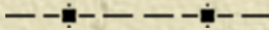


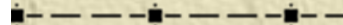
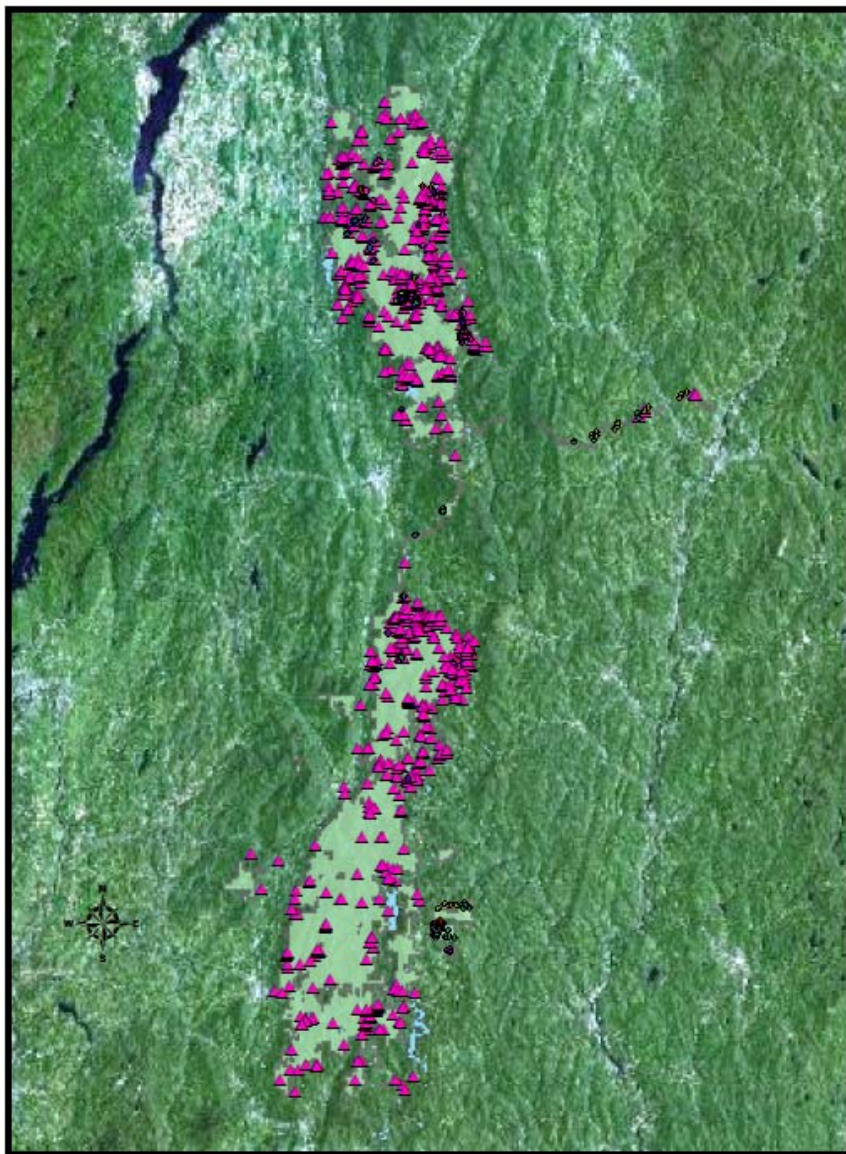
- ✧ The National Forest *system* is >100 years old, dating back to the 1897 Organic Act designed to manage public “forest reserve” lands in the West.
- ✧ The Green Mountain NF is “only” 79 years old, established in 1932 to protect watersheds that had been damaged through poor logging practices, abandonment of hill farms, and the great flood.
- ✧ AND this is the centennial of the Weeks Act.

Heritage Resources Program



- ✧ Stewardship – identifying and taking care of significant sites, structures, landscapes, & data
- ✧ Outreach – responding to and communicating with the public, and providing “hands-on” opportunities
- ✧ Context for Ecosystem Management (background)



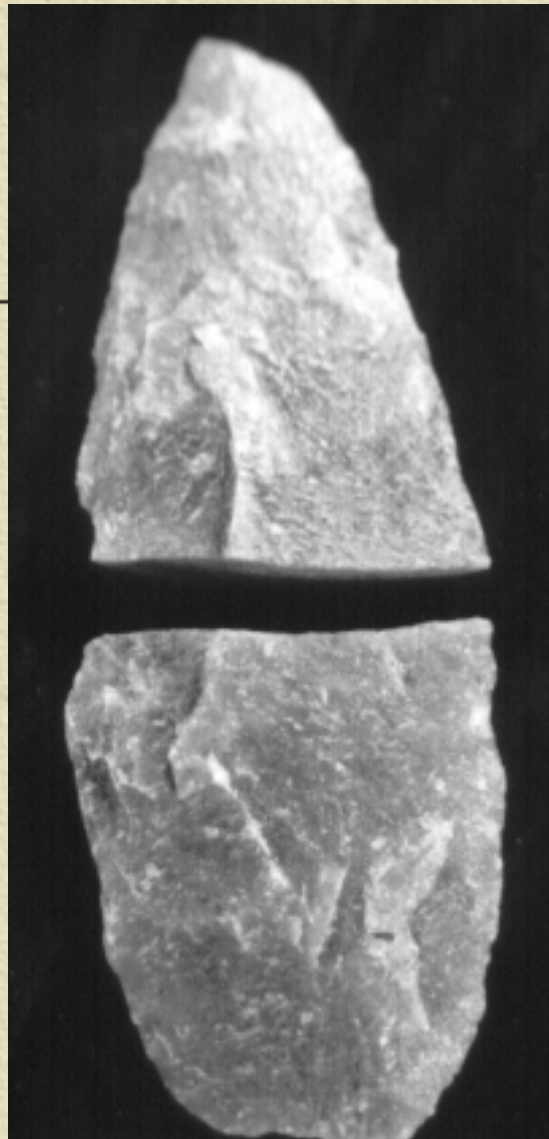








✠ Tabular cores

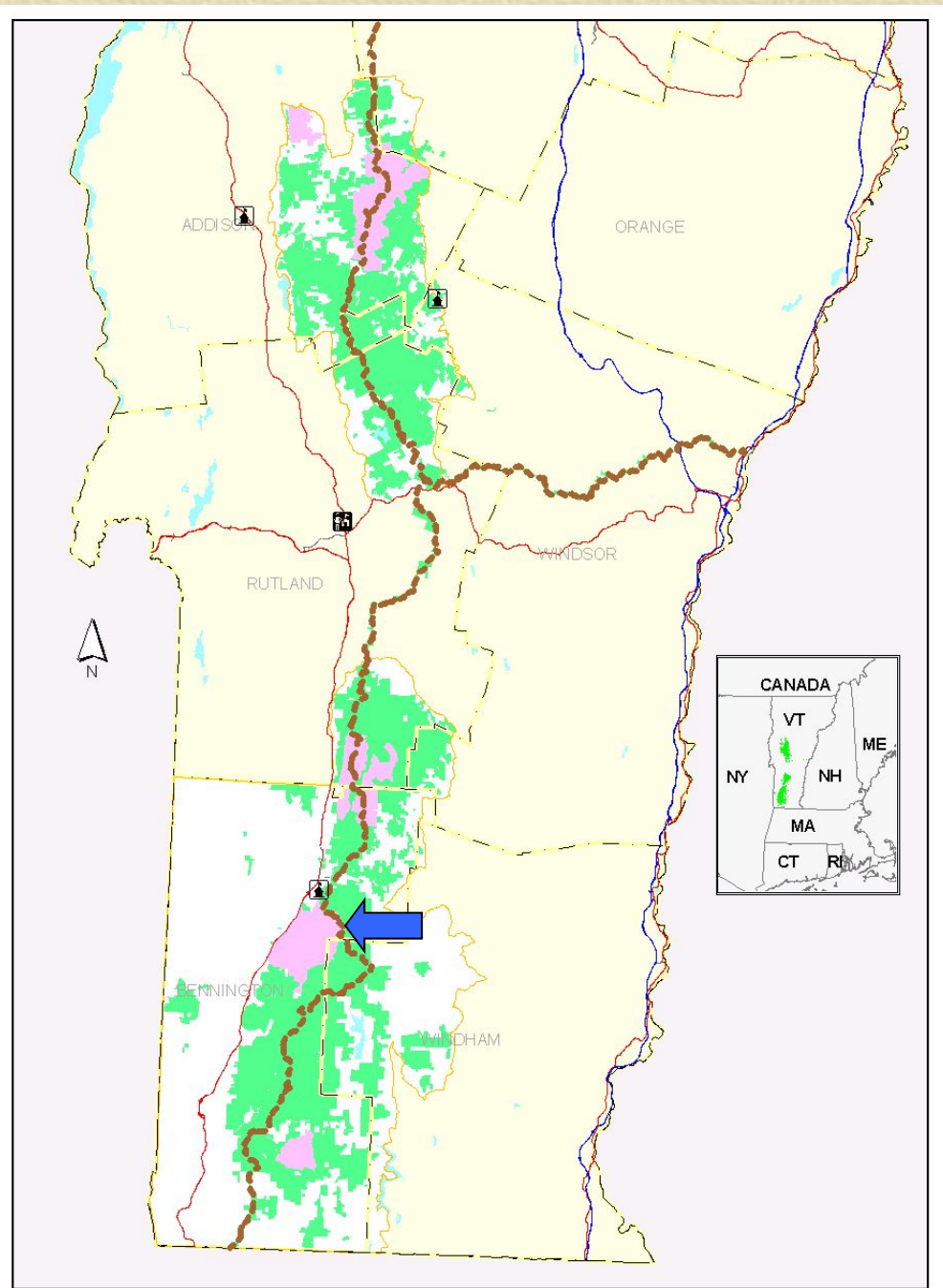


“Bifacial blank”



Where *IS*...

The Lye Brook Wilderness?



Lye Brook Wilderness Additions

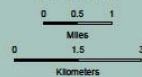
State of Vermont



Legend



Scale 1:75,000



Green Mountain National Forest

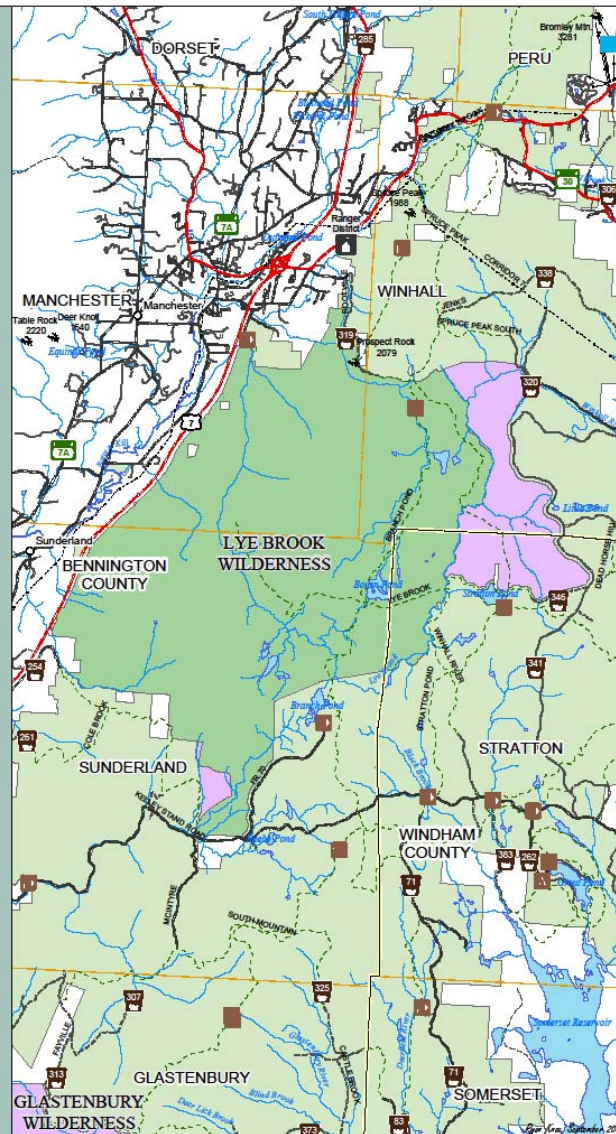
- Proposed Wilderness Area
- Existing Wilderness Area
- National Forest System Land
- Arterial Road, Hard Surface

Roads (surface types)

- Hard surface (pavement)
- Gravel
- Soil or graded and drained earth
- Unimproved/Primitive
- Impassable or untravelled
- Unknown surface type

State Boundary

- County Boundary
- Town Boundary
- Trails
- Transmission Line
- Ski Lift

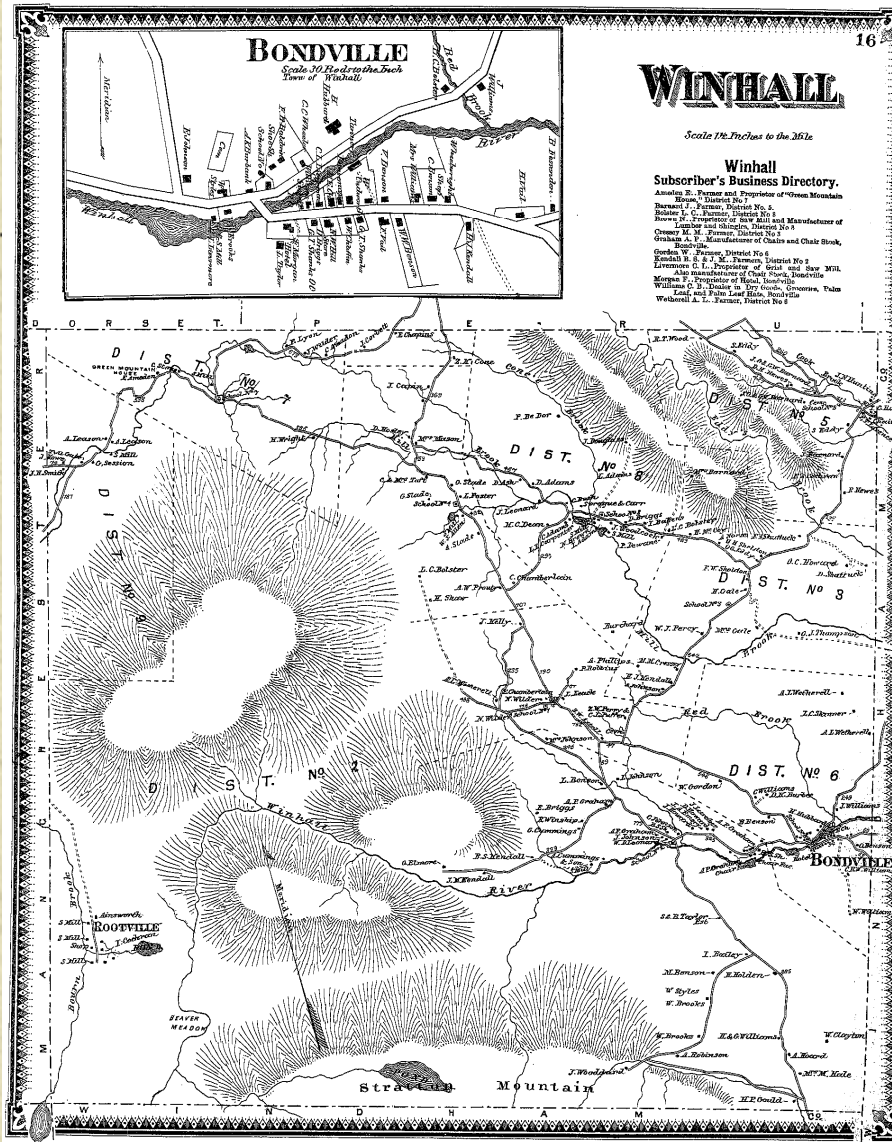
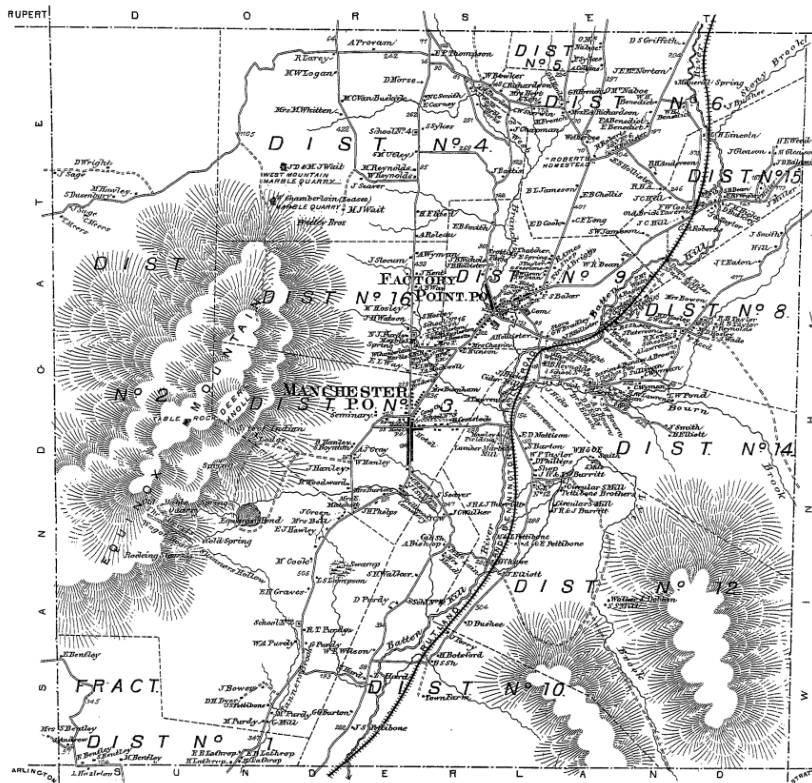


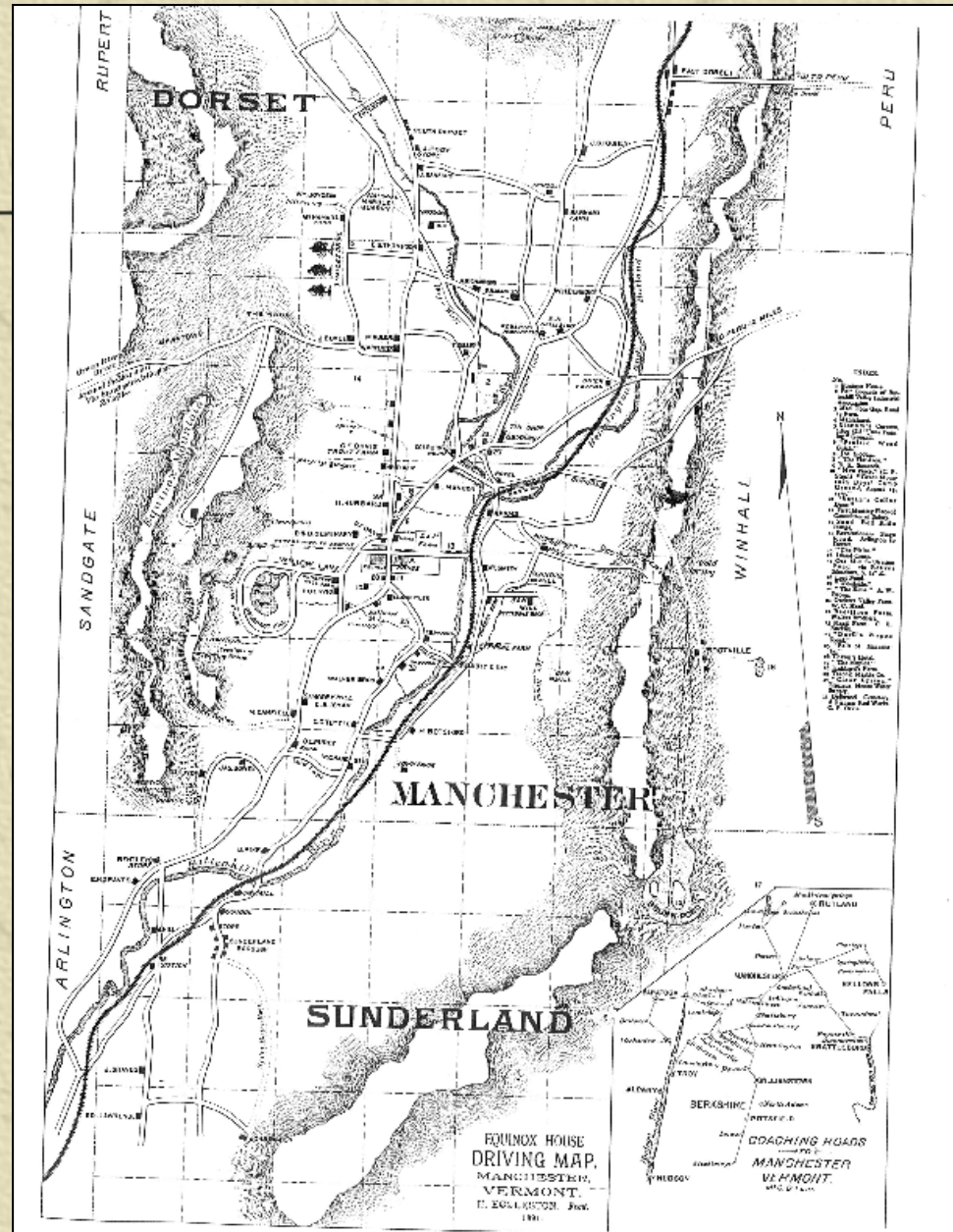
U.S. DEPARTMENT OF AGRICULTURE
GREEN MOUNTAIN
National Forest

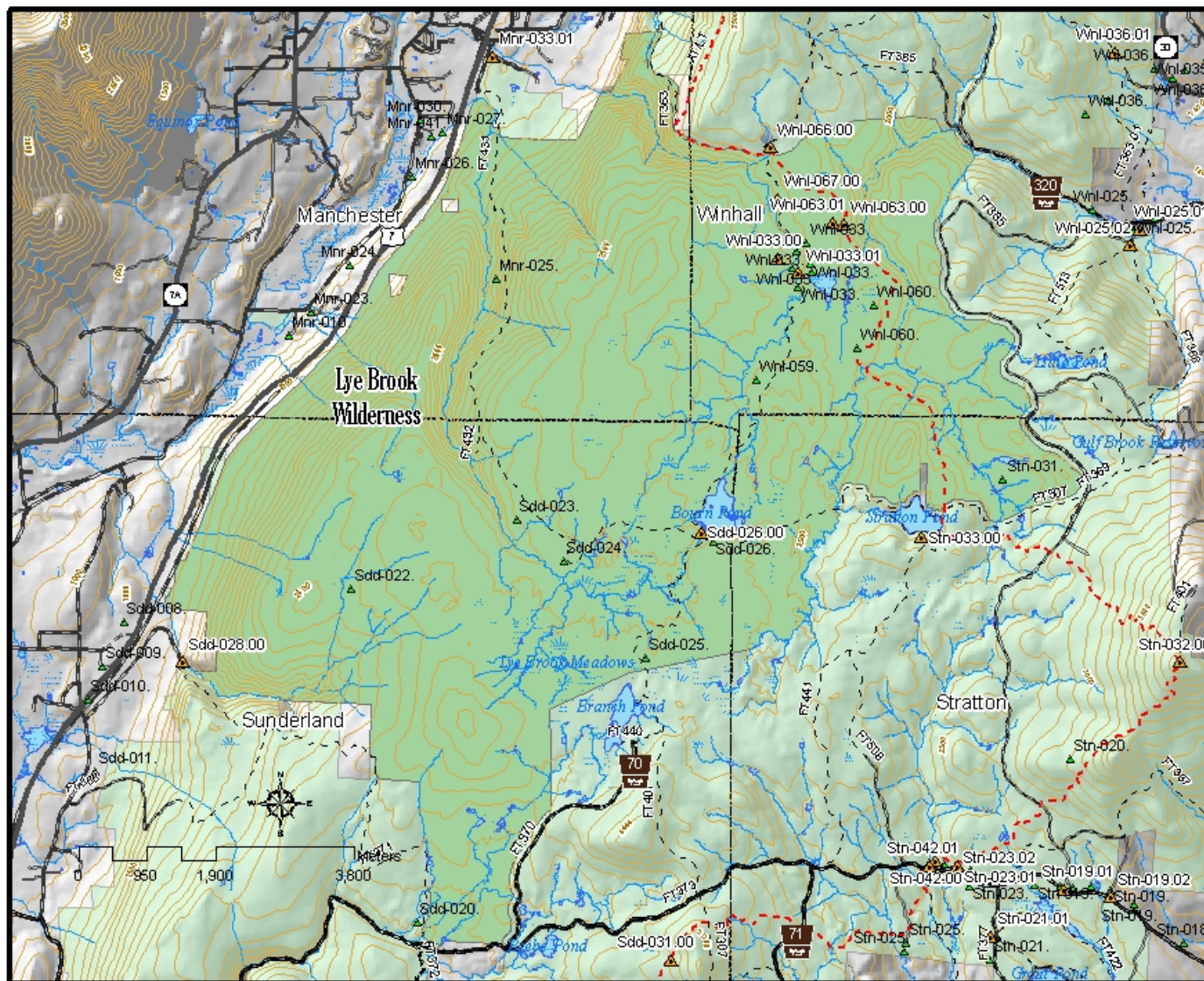
Beers' 1869 Atlas

MANCHESTER.

Scale: 1 1/2 Inches to the Mile.





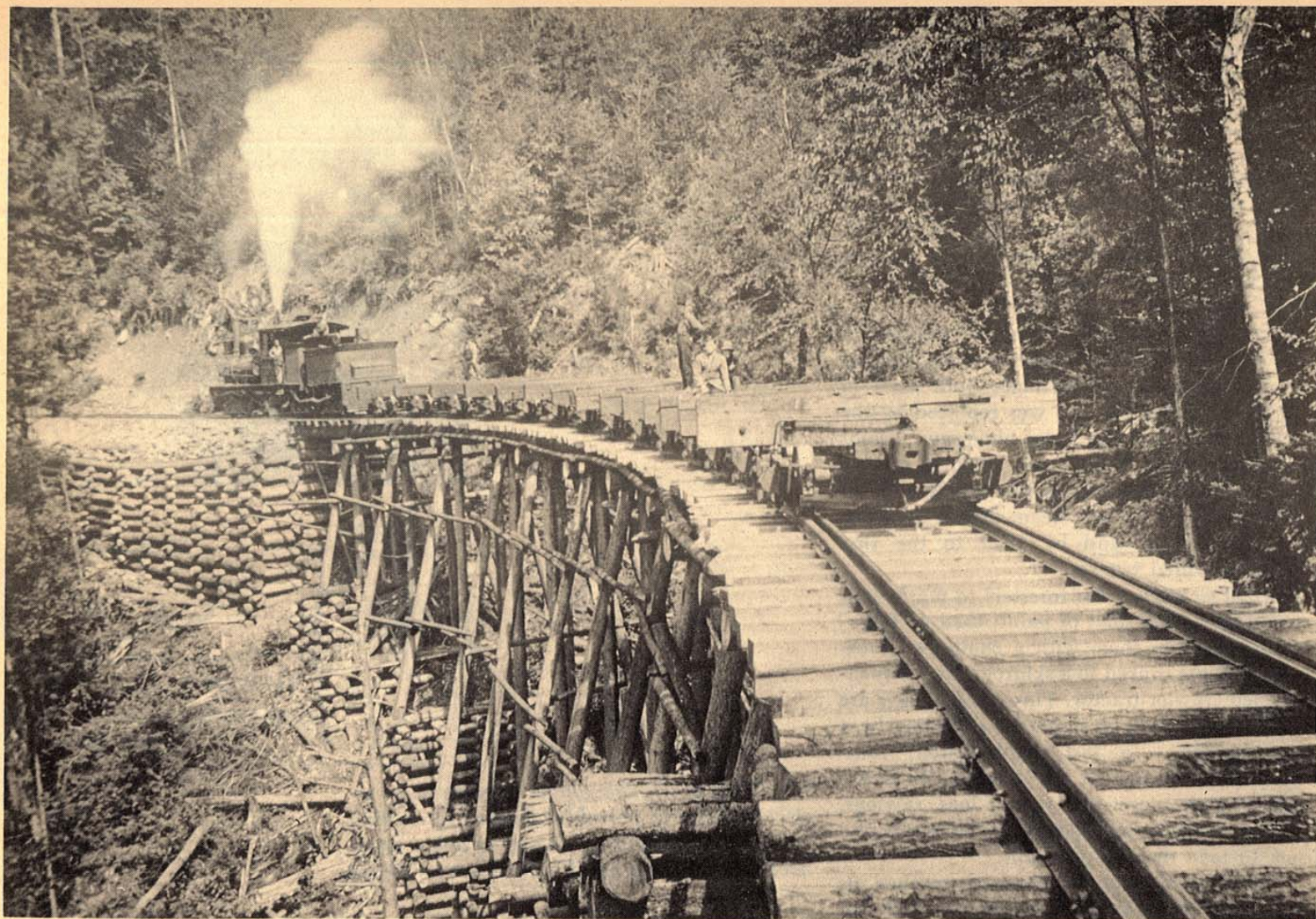


Lye Brook trail









7-8

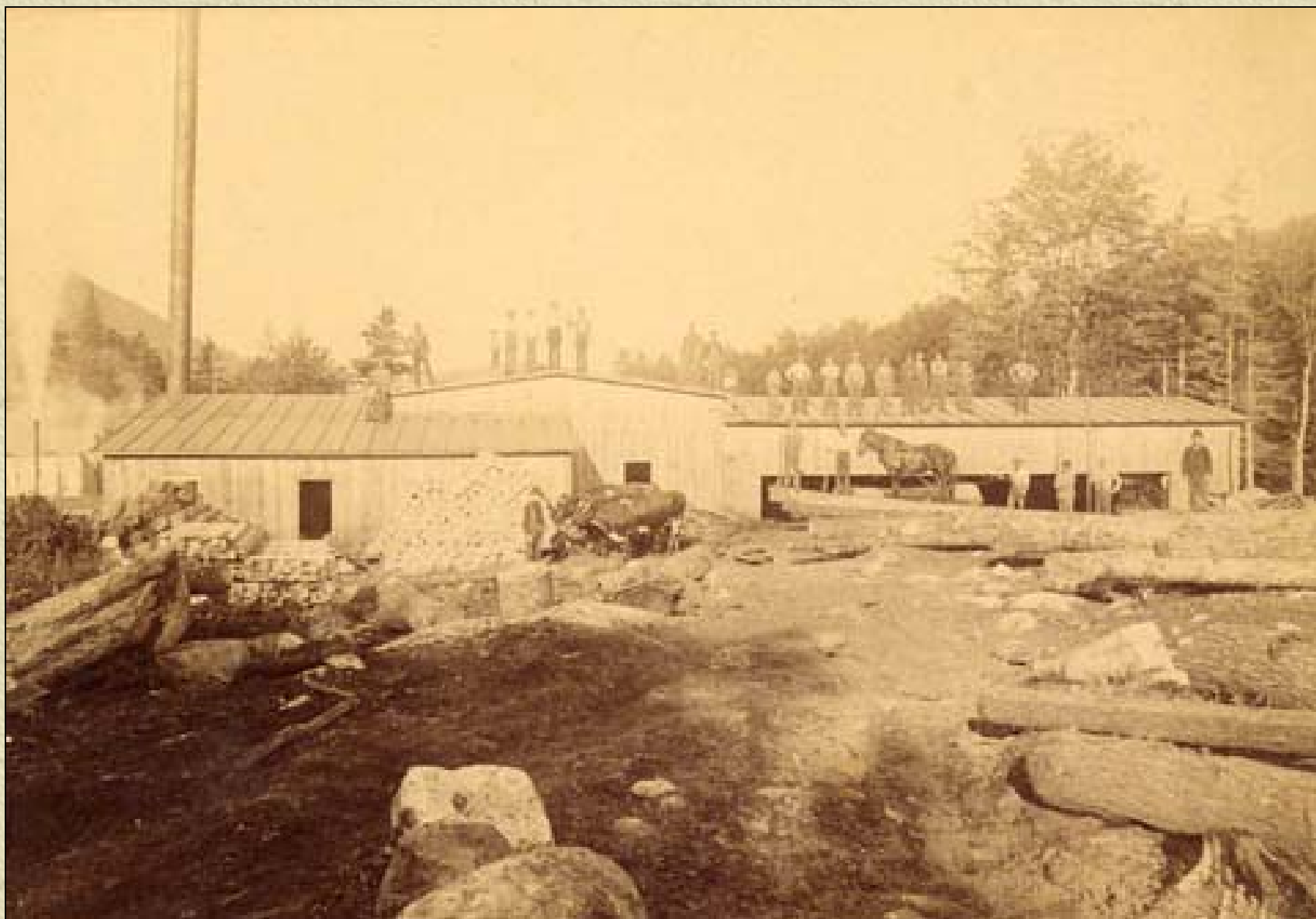
7-8. Over the "high trestle." Shay No. 6 backs up the mountain at Lye Brook, on the Rich Lumber Company's high trestle, part of the rail switchback by which logs were hauled down the steep east mountains.

7-9. Raw-log ties. Crewmen for the Rich Lumber Co. pound spikes into crude log ties as the roadbed stretches north of Bourn Pond.

high above Manchester. Line lasted from 1913 to 1919.

7-10. Panorama. From the Rich Lumber Co. job on Lye Brook the view northward stretches over workers' houses and the big sawmill yard at Richville, foreground, toward Manchester Village and Taconic Mountain range, left.

[1899 Aldrichville mill]



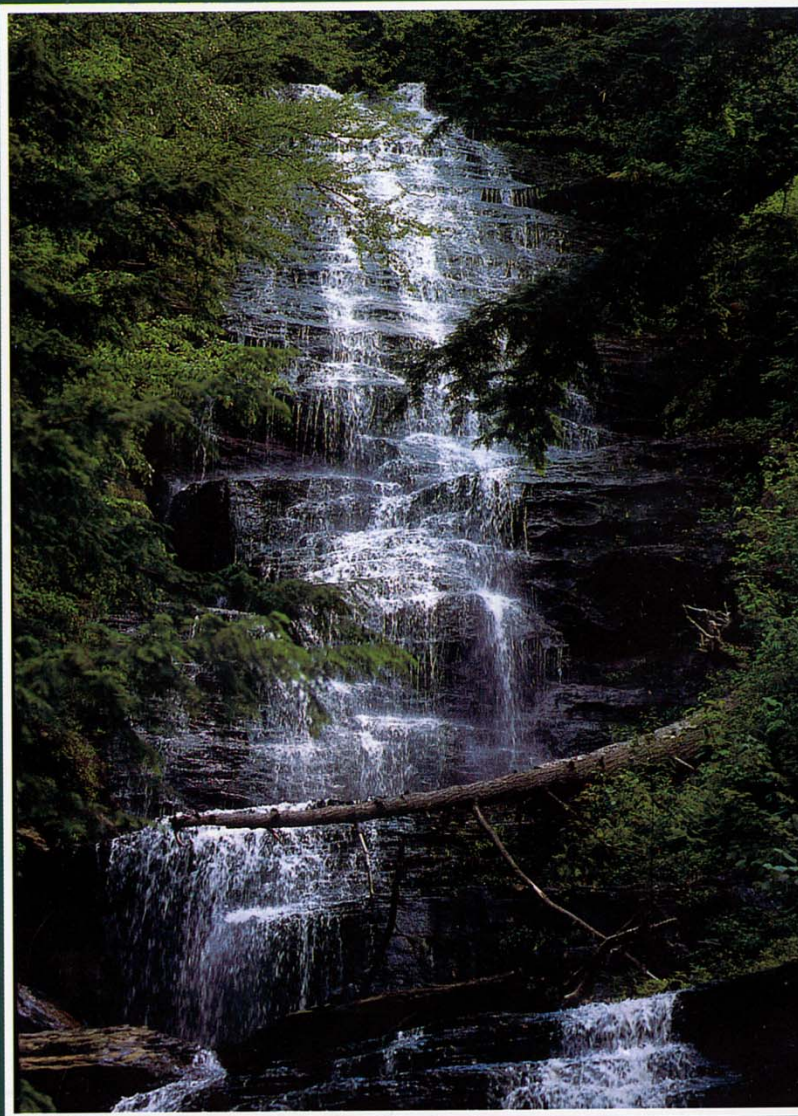
Charcoal kilns from late 19th c, (these are actually at Old Job)





7-15

(...and this one in Glastenbury)



Green Mountain
NATIONAL FOREST



